

LSU SYSTEM
Deposit and Collateral Report
For the Quarter Ended December 31, 2014

Deposits Requiring Posting of Collateral:	Demand Deposit Sweep/MMA Repurchase	Certificates of Deposit	Total Deposits in Financial Institutions	Collateral (1)
LSU A & M and LSUHSC New Orleans				
Chase - LSU, Health Plan Premium	\$ 46,891,428		\$ 46,891,428	\$ 74,251,455
Capital One CCD Program - LSU		\$ 8,000,000	8,000,000	18,182,126
Chase-HSCNO	20,266,864	18,600	20,285,464	28,106,712
Capital One - LSU-A	3,510,109		3,510,109	8,109,411
St. Landry Bank - LSU-E	681,547		681,547	500,658
Total	\$ 71,349,948	\$ 8,018,600	\$ 79,368,548	\$ 129,150,362
LSUHSC Shreveport				
US Bank	\$ 8,097		\$ 8,097	\$ 250,000
Raymond James	1,577,498		1,577,498	-
Regions Bank-EA Conway	2,703,079		2,703,079	2,752,140
Regions Bank-Huey P Long	3,382,338		3,382,338	3,444,985
Regions Bank-Shreveport	64,653,980		64,653,980	70,627,431
Regions Bank-Shreveport Endowment Fds	2,599,323		2,599,323	-
Total	\$ 74,924,315	\$ -	\$ 74,924,315	\$ 77,074,556
LSU HCSD				
JP Morgan Chase (HCSD) & Capital One (WSTMC)	\$ 99,419,575		\$ 99,419,575	not required
J. P. Morgan Chase (MCLNO Trust Fund)	5,140,703		5,140,703	\$ 5,111,575
Capital One (MCLNO Trust Fund)	2,380,221		2,380,221	2,156,322
Total	\$ 106,940,499		\$ 106,940,499	\$ 7,267,897
LSU - Shreveport				
Campus Federal Credit Union		\$ 100,000	\$ 100,000	\$ 250,000
Capital One (Hibernia National Bank)	2,044,387		2,044,387	6,999,893
Total	\$ 2,044,387	\$ 100,000	\$ 2,144,387	\$ 7,249,893
Total Requiring Collateral	\$ 255,259,149	\$ 8,118,600	\$ 263,377,749	\$ 220,742,708
Deposits In Trust or Federal Obligations Not Requiring Collateral				
Federated Money Markets	\$ 82,744,528		\$ 82,744,528	
Federated Funds-Treas. Oblig. (2)	51,373		51,373	
Total	\$ 82,795,901	\$ -	\$ 82,795,901	
Total Deposits	\$ 338,055,050	\$ 8,118,600	\$ 346,173,650	

(1) Collateral amounts include FDIC coverage of \$250,000 on Demand Deposits, \$250,000 on CD's and \$250,000 by the National Credit Union Share Insurance Fund on deposits with Campus Federal Credit Union.

(2) One Group & Federated Funds are no-load, open ended mutual funds investing in U.S. Treasury obligations.

LSU System
Investment Summary
For the Quarter Ended December 31, 2014

Fund Description	As of 7/1/2014	As of 9/30/2014		As of 12/31/2014		As of 3/31/2015		As of 06/30/2015	
	Value	Cost	Market Value	Cost	Market Value	Cost	Market Value	Cost	Market Value
Current Funds									
Cash/Sweeps	\$255,081,416	\$238,148,609	\$238,148,609	\$244,809,732	\$244,809,732	\$0	\$0	\$0	\$0
Money Market Accounts/Repos (A)	\$275,903	\$795,078	\$795,078	\$6,961,703	\$6,961,703	\$0	\$0	\$0	\$0
Certificates of Deposit	\$12,100,000	\$8,100,000	\$8,100,000	\$8,100,000	\$8,100,000	\$0	\$0	\$0	\$0
CMO's	\$4,397,354	\$3,812,071	\$3,931,562	\$3,379,427	\$3,463,838	\$0	\$0	\$0	\$0
Agency Securities (B)	\$158,851,455	\$185,722,415	\$185,518,960	\$171,746,653	\$173,716,389	\$0	\$0	\$0	\$0
Mortgaged Backed Securities	\$24,290,792	\$25,402,855	\$25,715,176	\$26,907,513	\$27,387,527	\$0	\$0	\$0	\$0
Equity Securities (C)	\$63	\$0	\$82,308	\$0	\$82,875	\$0	\$0	\$0	\$0
Bond Mutual Funds	\$44,587,216	\$46,697,531	\$43,315,615	\$46,697,531	\$43,292,425	\$0	\$0	\$0	\$0
Municipal Bonds (E)	\$44,260,206	\$46,586,756	\$44,284,729	\$48,350,607	\$46,854,360	\$0	\$0	\$0	\$0
Corporate Bonds (D)	\$150,982,057	\$167,247,843	\$168,853,093	\$164,489,438	\$165,791,287	\$0	\$0	\$0	\$0
US Gov Related Securities	\$0	\$0	\$0	\$0	\$0	\$0	\$0	\$0	\$0
Total	\$703,768,087	\$733,452,272	\$729,662,560	\$727,411,667	\$726,482,016	\$0	\$0	\$0	\$0
Endowment Funds									
Cash/Sweeps	\$2,643,389	\$2,647,306	\$2,647,306	\$2,650,656	\$2,650,656	\$0	\$0	\$0	\$0
Money Market Accounts/Repos (A)	\$48,094	\$232,322	\$232,322	\$191,935	\$191,935	\$0	\$0	\$0	\$0
Certificates of Deposit	\$18,600	\$18,600	\$18,600	\$18,600	\$18,600	\$0	\$0	\$0	\$0
Agency Securities (B)	\$9,167,668	\$8,138,160	\$8,153,670	\$8,716,494	\$8,780,188	\$0	\$0	\$0	\$0
Equity Securities (C)	\$10,027,207	\$6,591,396	\$9,994,604	\$6,591,396	\$10,411,134	\$0	\$0	\$0	\$0
Mutual Funds	\$56,394,208	\$53,056,172	\$55,530,957	\$53,256,516	\$55,972,851	\$0	\$0	\$0	\$0
Corporate Bonds (D)	\$6,373,365	\$7,063,835	\$7,320,340	\$7,063,835	\$7,310,390	\$0	\$0	\$0	\$0
Total	\$84,672,531	\$77,747,791	\$83,897,799	\$78,489,432	\$85,335,754	\$0	\$0	\$0	\$0
Other Funds									
Cash/Sweeps	\$7,472,995	\$7,667,764	\$7,667,764	\$7,798,761	\$7,798,761	\$0	\$0	\$0	\$0
Money Market Accounts/Repos (A)	\$77,691,185	\$62,531,824	\$62,531,824	\$75,590,890	\$75,590,890	\$0	\$0	\$0	\$0
Treasury Notes	\$51,852,207	\$39,098,113	\$39,120,088	\$26,804,650	\$26,818,923	\$0	\$0	\$0	\$0
Agency Securities (B)	\$21,366,224	\$21,153,983	\$21,390,885	\$21,153,983	\$21,499,389	\$0	\$0	\$0	\$0
Equity Securities (C)	\$499,373	\$0	\$466,488	\$0	\$458,552	\$0	\$0	\$0	\$0
US Gov Related Securities	\$63,308	\$56,307	\$56,307	\$51,373	\$51,373	\$0	\$0	\$0	\$0
Total	\$158,945,292	\$130,507,991	\$131,233,356	\$131,399,657	\$132,217,888	\$0	\$0	\$0	\$0
Grand Total	\$947,385,910	\$941,708,054	\$944,793,715	\$937,300,756	\$944,035,658	\$0	\$0	\$0	\$0
Deposits in Financial Institutions									
Total Cash/Sweeps/MMA/Repos	\$343,212,982	\$312,022,903	\$312,022,903	\$338,003,677	\$338,003,677	\$2	\$2	\$0	\$0
Total Certificates of Deposit	\$12,118,600	\$8,118,600	\$8,118,600	\$8,118,600	\$8,118,600	\$0	\$0	\$0	\$0
US Gov Related Securities	\$63,308	\$56,307	\$56,307	\$51,373	\$51,373	\$0	\$0	\$0	\$0
Total Deposits	\$355,394,890	\$320,197,810	\$320,197,810	\$346,173,650	\$346,173,650	\$2	\$2	\$0	\$0
Other Investments									
Treasury Notes	\$60,793,832	\$50,037,227	\$50,037,518	\$32,773,713	\$32,840,803	\$0	\$0	\$0	\$0
CMO's	\$4,397,354	\$3,812,071	\$3,931,562	\$3,379,427	\$3,463,838	\$0	\$0	\$0	\$0
Agency Securities (B)	\$189,385,347	\$215,014,558	\$215,063,515	\$201,617,130	\$203,995,966	\$0	\$0	\$0	\$0
Mortgaged Backed Securities	\$24,290,792	\$25,402,855	\$25,715,176	\$26,907,513	\$27,387,527	\$0	\$0	\$0	\$0
Equity Securities (C)	\$10,526,643	\$6,591,396	\$10,543,400	\$6,591,396	\$10,952,561	\$0	\$0	\$0	\$0
Bond Mutual Funds	\$44,587,216	\$46,697,531	\$43,315,615	\$46,697,531	\$43,292,425	\$0	\$0	\$0	\$0
Mutual Funds	\$56,394,208	\$53,056,172	\$55,530,957	\$101,607,123	\$102,827,211	\$0	\$0	\$0	\$0
Municipal Bonds (E)	\$44,260,206	\$46,586,756	\$44,284,729	\$48,350,607	\$46,854,360	\$0	\$0	\$0	\$0
Corporate Bonds (D)	\$157,355,422	\$174,311,678	\$176,173,433	\$171,553,273	\$173,101,677	\$0	\$0	\$0	\$0
Total Other	\$591,991,020	\$621,510,244	\$624,595,905	\$639,477,713	\$644,716,368	\$0	\$0	\$0	\$0
Grand Total	\$947,385,910	\$941,708,054	\$944,793,715	\$985,651,363	\$990,890,018	\$2	\$2	\$0	\$0
LSU and Related Campuses									
Current Funds									
Cash/Sweeps	\$69,854,093	\$60,064,286	\$60,064,286	\$71,349,948	\$71,349,948				
Money Market Accounts/Repos (A)	\$265,852	\$785,018	\$785,018	6,951,634	6,951,634				
Certificates of Deposit	\$12,000,000	\$8,000,000	\$8,000,000	8,000,000	8,000,000				
Treasury Notes	\$5,952,180	\$7,947,969	\$7,935,320	5,969,063	6,021,880				
CMO's	\$4,397,354	\$3,812,071	\$3,931,562	3,379,427	3,463,838				
Agency Securities (B)	\$141,403,590	\$177,723,642	\$177,666,575	158,620,667	160,639,379				
Mortgaged Backed Securities	\$24,290,792	\$22,862,624	\$23,166,153	22,421,222	22,908,244				
Equity Securities (C)	\$63	\$0	\$82,308	0	82,875				
Bond Mutual Funds	\$44,587,216	\$46,697,531	\$43,315,615	46,697,531	43,292,425				
Municipal Bonds (E)	\$43,290,244	\$45,598,524	\$43,314,546	45,546,081	44,066,827				
Corporate Bonds (D)	\$146,096,367	\$157,929,049	\$159,609,600	154,456,363	155,844,196				
Total	\$492,137,751	\$531,420,714	\$527,870,983	\$523,391,936	\$522,621,246	\$0	\$0	\$0	\$0
Endowment Funds									
Money Market Accounts/Repos (A)	\$48,094	\$232,322	\$232,322	191,935	191,935				
Certificates of Deposit	\$18,600	\$18,600	\$18,600	18,600	18,600				
Agency Securities (B)	\$9,167,668	\$8,138,160	\$8,153,670	8,716,494	8,780,188				
Equity Securities (C)	\$10,015,161	\$6,583,746	\$9,983,327	6,583,746	10,398,018				
Corporate Bonds (D)	\$6,373,365	\$7,063,835	\$7,320,340	7,063,835	7,310,390				
Total	\$25,622,888	\$22,036,663	\$25,708,259	\$22,574,610	\$26,699,131	\$0	\$0	\$0	\$0
Other Funds									
Money Market Accounts/Repos (A)	\$69,299,252	\$54,129,726	\$54,129,726	67,180,317	67,180,317				
Treasury Notes	\$51,852,207	\$39,098,113	\$39,120,088	26,804,650	26,818,923				
Agency Securities (B)	\$21,366,224	\$21,153,983	\$21,390,885	21,153,983	21,499,389				
Total	\$142,517,683	\$114,381,822	\$114,640,699	\$115,138,950	\$115,498,629	\$0	\$0	\$0	\$0
Grand Total	\$660,278,322	\$667,839,199	\$668,219,941	\$661,105,496	\$664,819,006	\$0	\$0	\$0	\$0

LSU System
Investment Summary
For the Quarter Ended December 31, 2014

Fund Description	As of 7/1/2014	As of 9/30/2014		As of 12/31/2014		As of 3/31/2015		As of 06/30/2015	
	Value	Cost	Market Value	Cost	Market Value	Cost	Market Value	Cost	Market Value
LSUHSC Shreveport									
Current Funds									
Cash/Sweeps S.	\$76,506,844	\$69,267,534	\$69,267,534	\$66,239,575	\$66,239,575				
Cash/Sweeps C.	\$2,698,625	\$4,884,656	\$4,884,656	\$2,703,079	\$2,703,079				
Cash/Sweeps H.	\$7,537,281	\$5,714,259	\$5,714,259	\$3,382,338	\$3,382,338				
Cash/Sweeps	\$86,742,750	\$79,866,449	\$79,866,449	\$72,324,992	\$72,324,992	\$0	\$0	\$0	\$0
Treasury Notes	\$2,989,445	\$2,991,145	\$2,982,110	\$0	\$0				
Agency Securities (B)	\$17,447,865	\$7,998,773	\$7,852,385	\$13,125,986	\$13,077,010				
Mortgaged Backed Securities	\$0	\$2,540,231	\$2,549,023	\$4,486,291	\$4,479,283				
Municipal Bonds (E)	\$969,962	\$988,232	\$970,183	\$2,804,526	\$2,787,533				
Corporate Bonds (D)	\$4,885,690	\$9,318,794	\$9,243,493	\$10,033,075	\$9,947,091				
Total	\$113,035,712	\$103,703,624	\$103,463,643	\$102,774,870	\$102,615,909	\$0	\$0	\$0	\$0
Endowment Funds									
Cash/Sweeps	\$2,592,560	\$2,595,973	\$2,595,973	\$2,599,323	\$2,599,323				
Equity Securities (C)	\$12,046	\$7,650	\$11,277	\$7,650	\$13,116				
Mutual Funds	\$56,394,208	\$53,056,172	\$55,530,957	\$53,256,516	\$55,972,851				
Total	\$58,998,814	\$55,659,795	\$58,138,207	\$55,863,489	\$58,585,290	\$0	\$0	\$0	\$0
Other Funds									
Total	\$0	\$0	\$0	\$0	\$0	\$0	\$0	\$0	\$0
Grand Total	\$172,034,526	\$159,363,419	\$161,601,850	\$158,638,359	\$161,201,199	\$0	\$0	\$0	\$0
LSU HCSD									
Current Funds									
Cash/Sweeps	\$97,080,549	\$95,277,300	\$95,277,300	\$99,419,575	\$99,419,575				
Total	\$97,080,549	\$95,277,300	\$95,277,300	\$99,419,575	\$99,419,575	\$0	\$0	\$0	\$0
Endowment Funds									
Total	\$0	\$0	\$0	\$0	\$0	\$0	\$0	\$0	\$0
Other Funds									
Cash/Sweeps	\$7,197,883	\$7,389,927	\$7,389,927	\$7,520,924	\$7,520,924				
Money Market Accounts/Repos (A)	\$8,391,933	\$8,402,098	\$8,402,098	\$8,410,573	\$8,410,573				
Equity Securities (C)	\$499,373		\$466,488		\$458,552				
US Gov Related Securities	\$63,308	\$56,307	\$56,307	\$51,373	\$51,373				
Total	\$16,152,497	\$15,848,332	\$16,314,820	\$15,982,870	\$16,441,422	\$0	\$0	\$0	\$0
Grand Total	\$113,233,046	\$111,125,632	\$111,592,120	\$115,402,445	\$115,860,997	\$0	\$0	\$0	\$0
LSU - Shreveport									
Current Funds *									
Cash/Sweeps	\$1,404,024	\$2,940,574	\$2,940,574	\$1,715,217	\$1,715,217				
Money Market Accounts/Repos (A)	\$10,051	\$10,060	\$10,060	\$10,069	\$10,069				
Certificates of Deposit	\$100,000	\$100,000	\$100,000	\$100,000	\$100,000				
Total	\$1,514,075	\$3,050,634	\$3,050,634	\$1,825,286	\$1,825,286	\$0	\$0	\$0	\$0
Endowment Funds									
Cash/Sweeps	\$50,829	\$51,333	\$51,333	\$51,333	\$51,333				
Total	\$50,829	\$51,333	\$51,333	\$51,333	\$51,333	\$0	\$0	\$0	\$0
Other Funds									
Cash/Sweeps	\$275,112	\$277,837	\$277,837	\$277,837	\$277,837				
Total	\$275,112	\$277,837	\$277,837	\$277,837	\$277,837	\$0	\$0	\$0	\$0
Grand Total	\$1,840,016	\$3,379,804	\$3,379,804	\$2,154,456	\$2,154,456	\$0	\$0	\$0	\$0
System Total	\$947,385,910	\$941,708,054	\$944,793,715	\$937,300,756	\$944,035,658	\$0	\$0	\$0	\$0

* LSUS has deposited \$1,221,942 with LSU Baton Rouge Campus for investment purposes

BENCHMARK NOTES (Example Only)

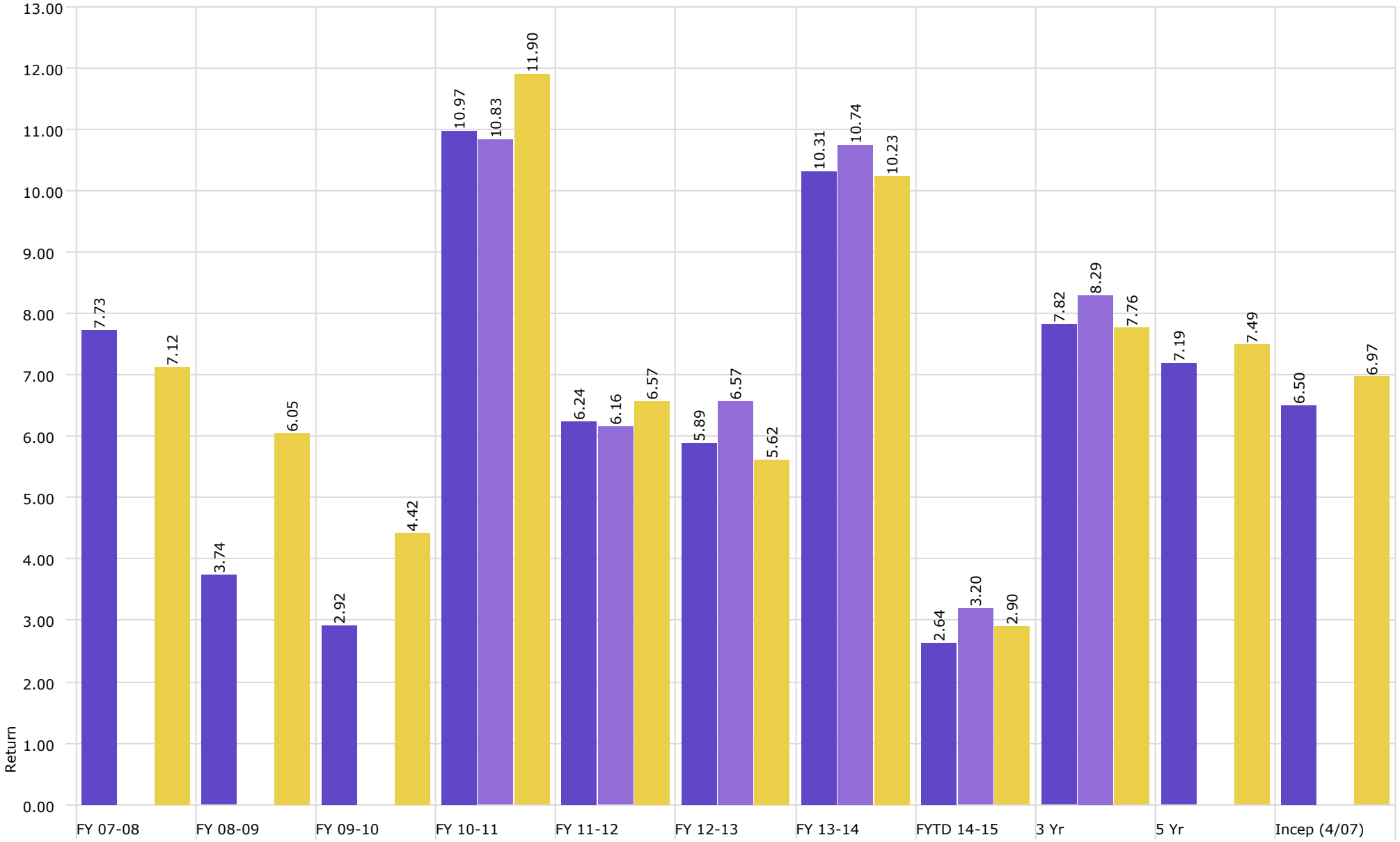
- (A) Benchmarked against 90 day T-Bil
- (B) Benchmarked against Barclay's US Agg Bond TR USC
- (C) US equities benchmarked against Russell 3000 and international against MSCI emerging market
- (D) Benchmarked against XYZ
- (E) Benchmarked against XYZ

Disclaimer: Pursuant to PM-9, corporate bonds/notes only available for investment beginning 7-1-2011
Louisiana law provides for restrictions on maturity and allocation and may effect benchmark comparisons



Investment Management Program Endowed Accounts Total Return

As of 12/31/2014

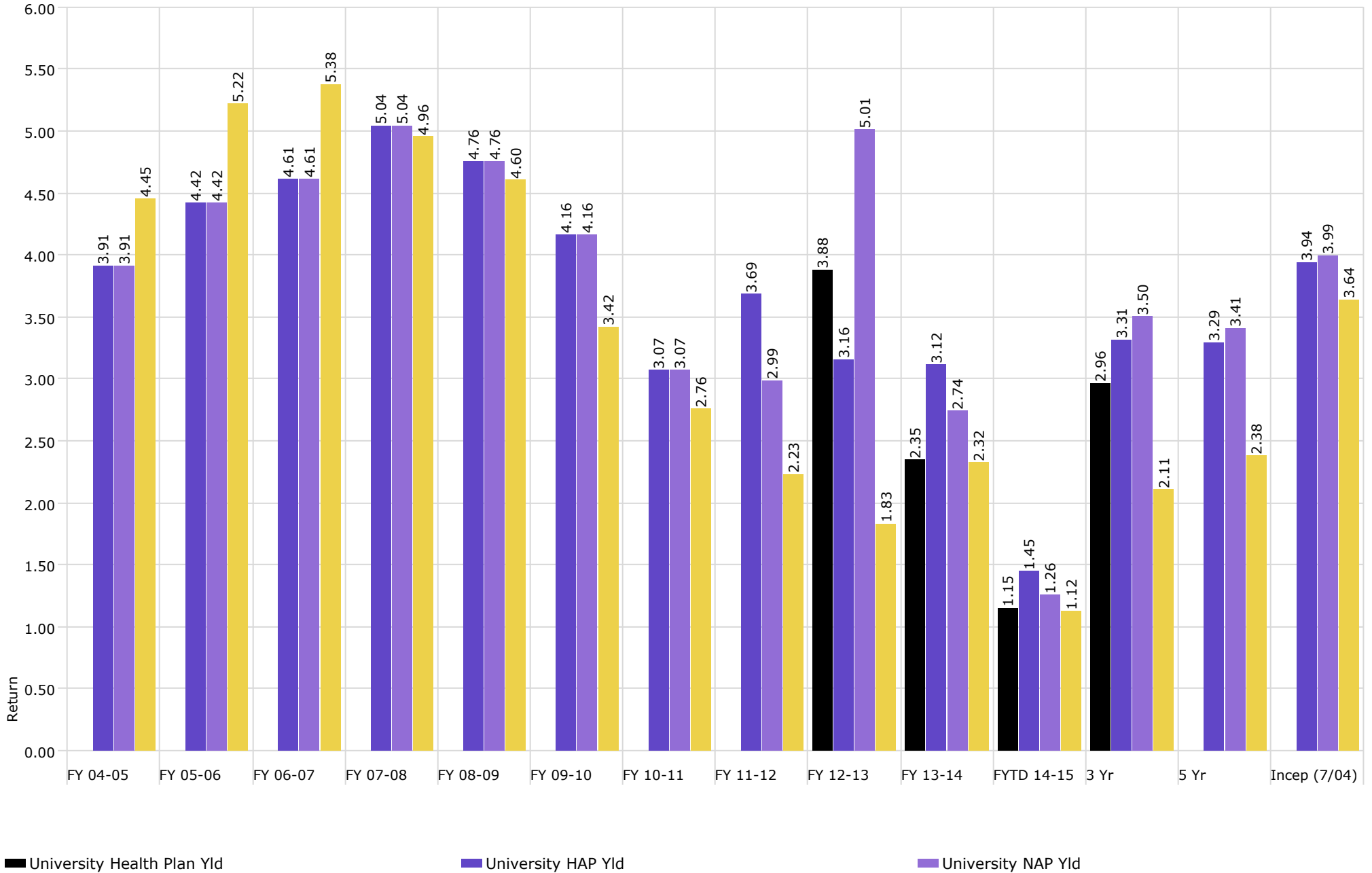


■ University Endowment

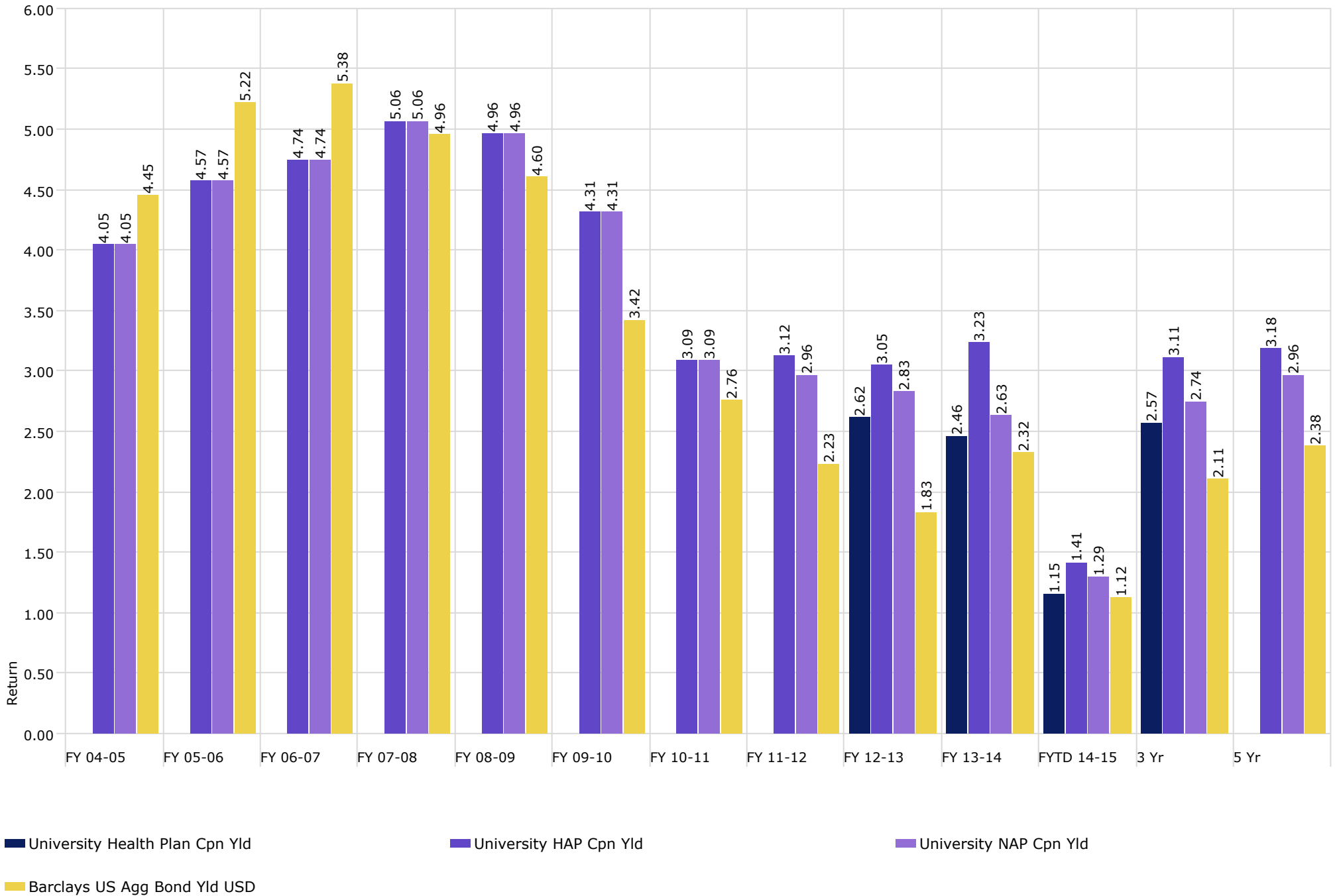
■ University Osher Endowment

■ University Endowed Benchmark

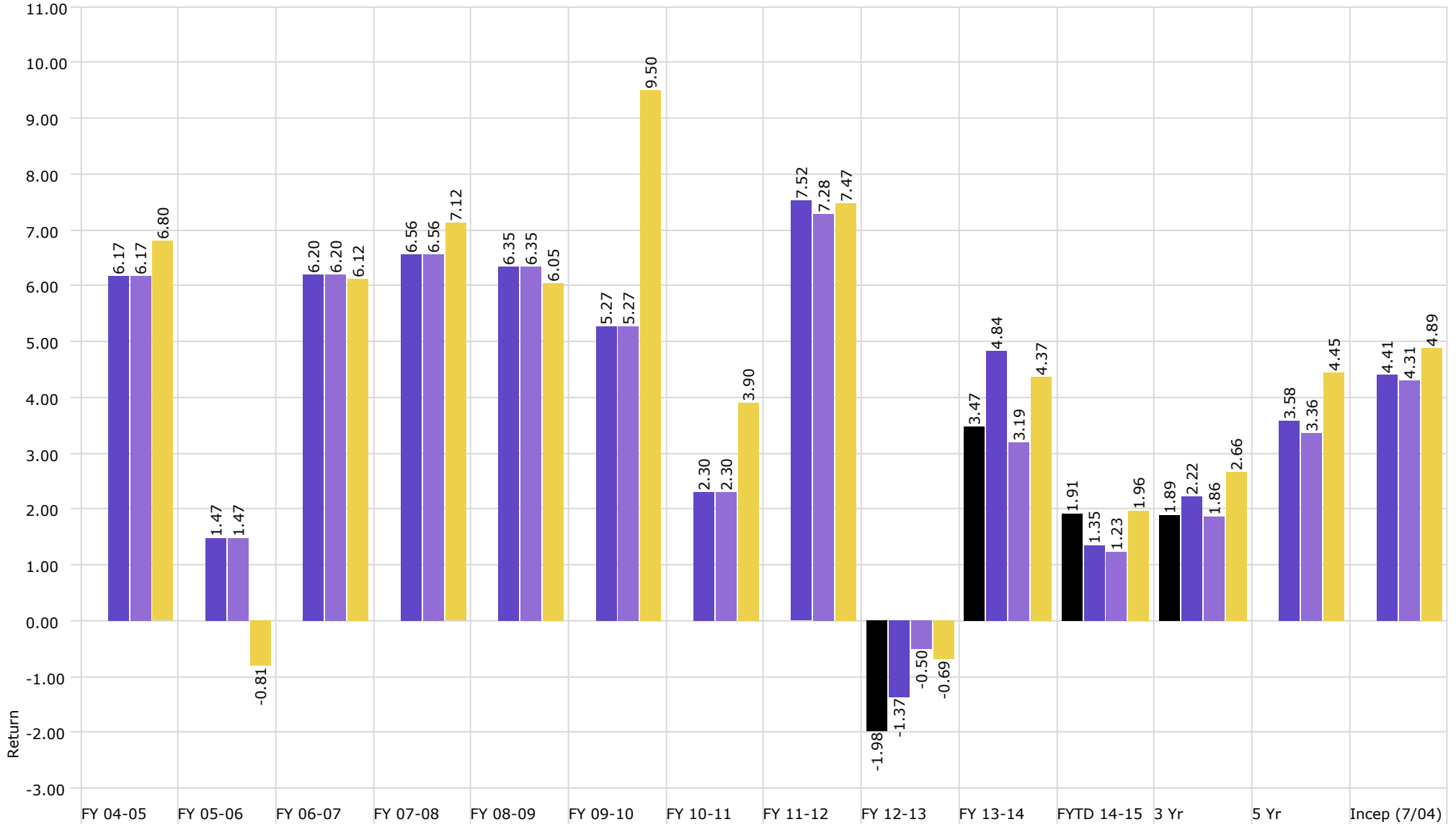
Investment Management Program Non Endowed Account (ex CDs) Realized Yield



Investment Management Program Non Endowed Account (ex CDs) Coupon Yield



Investment Management Program Non Endowed Account (ex CDs) Total Return



University Health Plan

University HAP

University NAP

Barclays US Agg Bond TR USD